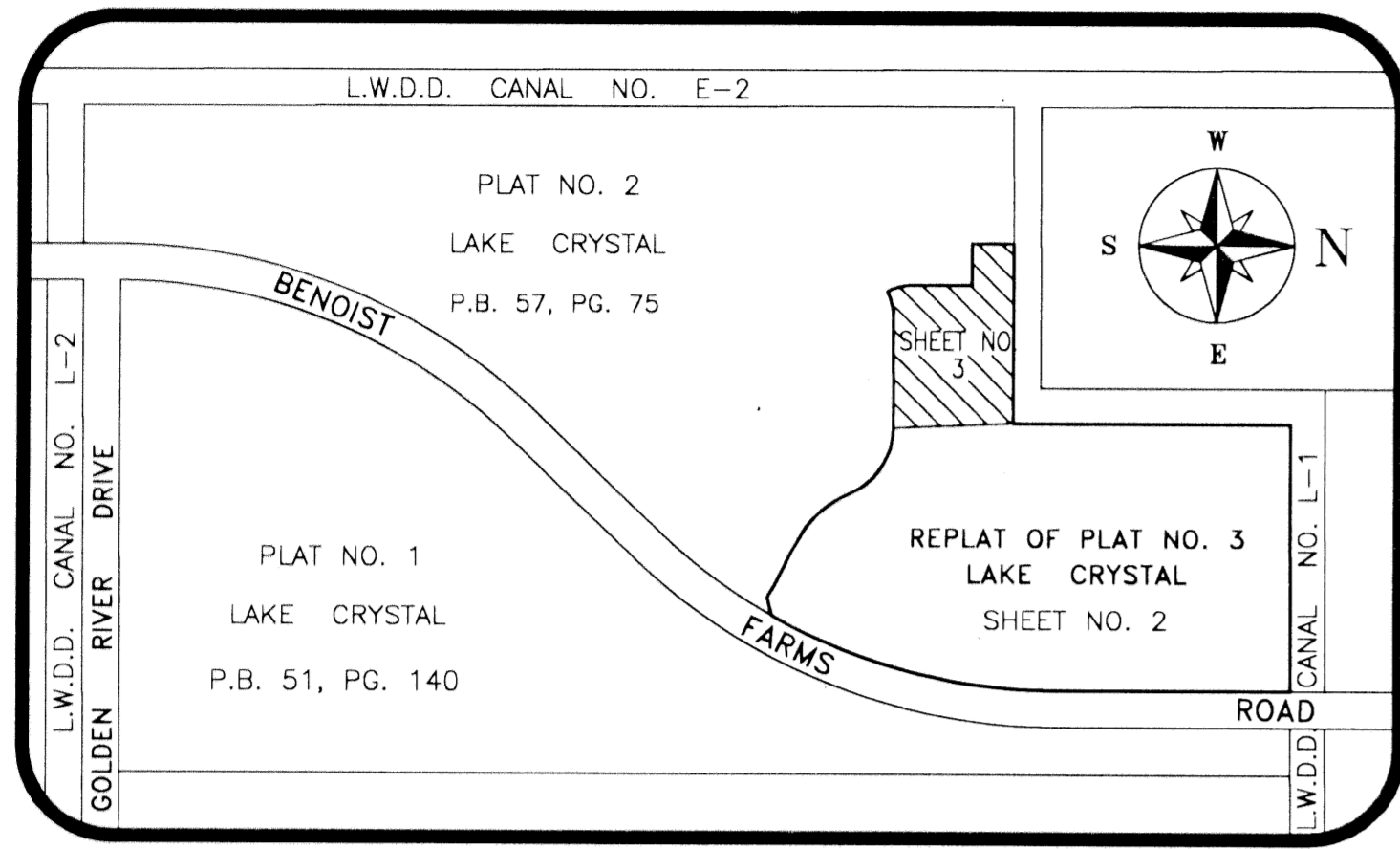


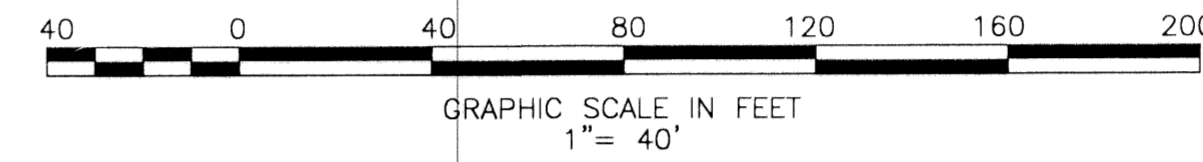
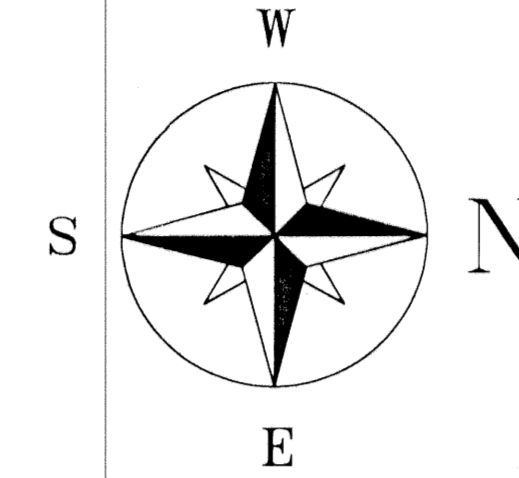
# LAKE CRYSTAL PLAT NO. 3- REPLAT

BEING A PORTION OF GOLDEN LAKES VILLAGE, P.U.D.

BEING A REPLAT OF PLAT NO. 3 OF LAKE CRYSTAL  
 AS RECORDED IN PLAT BOOK 78, PAGES 56 THRU 58 INCLUSIVE, PUBLIC RECORDS OF  
 PALM BEACH COUNTY, FLORIDA SECTION 29, TOWNSHIP 43 SOUTH, RANGE 42 EAST  
 SHEET 3 OF 3 JULY, 2001



KEY MAP  
NOT TO SCALE



NOTES, COORDINATES, BEARINGS AND DISTANCES

COORDINATES SHOWN ARE GRID DATUM - NAD 83, 1990 ADJUSTMENT ZONE - FLORIDA EAST LINEAR UNIT - US SURVEY FOOT COORDINATE SYSTEM 1983 STATE PLANE TRANSVERSE MERCATOR PROJECTION

ALL DISTANCES ARE GROUND

SCALE FACTOR - 1.0000256

GROUND DISTANCE X SCALE FACTOR = GRID DISTANCE  
 ROTATION EQUATION

$$\frac{N0^{\circ}00'00''E \text{ (PLAT BEARING)}}{N1^{\circ}16'37''W \text{ (GRID BEARING)}} = 01^{\circ}16'37''$$
"COUNTERCLOCKWISE" BEARING ROTATION (PLAT TO GRID)

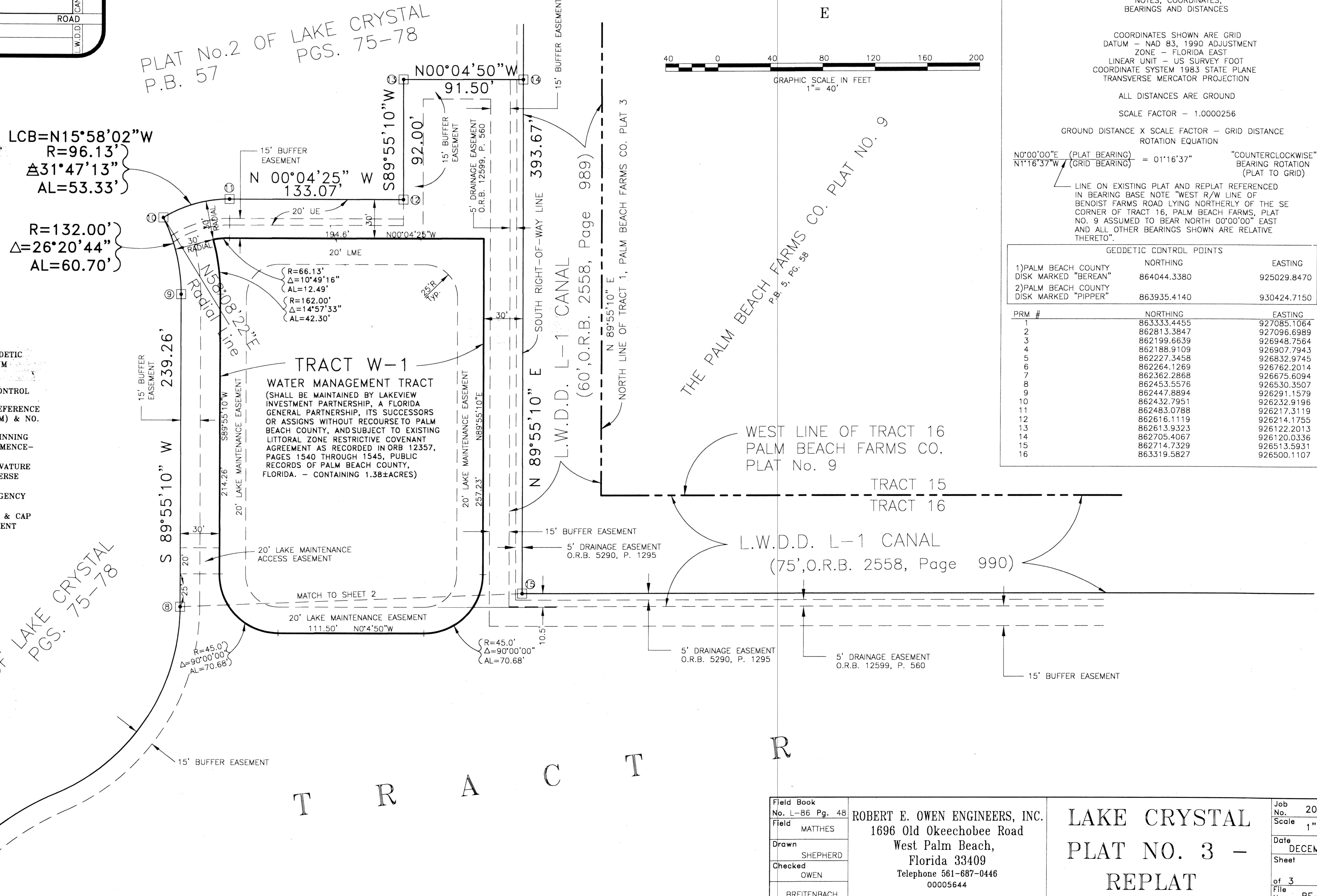
LINE ON EXISTING PLAT AND REPLAT REFERENCED IN BEARING BASE NOTE "WEST R/W LINE OF BENOIST FARMS ROAD LYING NORTHERLY OF THE SE CORNER OF TRACT 16, PALM BEACH FARMS, PLAT NO. 9 ASSUMED TO BEAR NORTH 00°00'00" EAST AND ALL OTHER BEARINGS SHOWN ARE RELATIVE THERETO".

GEODETTIC CONTROL POINTS		
	NORTHING	EASTING
1) PALM BEACH COUNTY DISK MARKED "BEREAN"	664044.3380	925029.8470
2) PALM BEACH COUNTY DISK MARKED "PIPPER"	663935.4140	930424.7150

PRM #	NORTHING	EASTING
1	863333.4455	927085.1064
2	862813.3847	927096.6989
3	862199.6639	926948.7564
4	862188.9109	926907.7943
5	862227.3458	926832.9745
6	862264.1269	926762.2014
7	862362.2868	926675.6094
8	862453.5576	926530.3507
9	862447.8894	926291.1579
10	862432.7951	926232.9196
11	862483.0788	926217.3119
12	862616.1119	926214.1755
13	862613.9323	926122.2013
14	862705.4067	926120.0336
15	862714.7329	926513.5931
16	863319.5827	926500.1107

**LEGEND:**

- |                                       |   |
|---------------------------------------|---|
| AL = ARC LENGTH                       | NGVD = NATIONAL GEODETIC VERTICAL DATUM OF 1929         |
| CALC = CALCULATED                     | O/S = OFFSET  |
| Δ = CENTRAL ANGLE                     | PCP = PERMANENT CONTROL POINT                           |
| DE = DRAINAGE EASEMENT                | PCP (2) = PERMANENT REFERENCE MONUMENT (PRM) & NO. PLAT |
| x 15.17 = ELEVATION, NGVD29, EXISTING | PL = PLAT   |
| [15.17] = ELEVATION, NGVD29, PROPOSED | POB = POINT OF BEGINNING                                |
| FD = FOUND                            | POC = POINT OF COMMENCEMENT                             |
| ■ = FD CONCRETE MONUMENT              | PC = POINT OF CURVATURE                                 |
| ● = FD PCP                            | PRC = POINT OF REVERSE CURVATURE                        |
| ○ = FD PK NAIL                        | PT = POINT OF TANGENCY                                  |
| ⊙ = FD ROD OR PIPE                    | R = RADIUS  |
| ⊙ = SET 1/2" ROD & CAP                | ○ = SET 1/2" ROD & CAP                                  |
| LAE = LIMITED ACCESS EASEMENT         | UE = UTILITY EASEMENT                                   |
| LME = LAKE MAINTENANCE EASEMENT       | ⊗ = UTILITY POLE  |
| LCB = LONG CHORD BEARING              |   |
| MS = MEASURE                          |   |



T R A C T R

Field Book No. L-86 Pg. 48
Field MATTHES
Drawn SHEPHERD
Checked OWEN
BREITENBACH

ROBERT E. OWEN ENGINEERS, INC.  
 1696 Old Okeechobee Road  
 West Palm Beach,  
 Florida 33409  
 Telephone 561-687-0446  
 00005644

LAKE CRYSTAL  
 PLAT NO. 3 -  
 REPLAT

Job No. 2000-1006
Scale 1"=40'
Date DECEMBER, 2000
Sheet 3
of 3
File No. BF-2402-C

LAKE CRYSTAL PLAT NO. 3 - REPLAT  
 92-09-01-1054  
 40-09-01-1054  
 85-09-01-1054  
 81-09-01-1054  
 GOLDEN LAKES VILLAGE